



WORK TOGETHER TO
CREATE THE FUTURE

BUREAU OF COMMERCE IN DALIAN JINPU NEW AREA

Address: Administrative Committee of Jinpu New Area, No.199, JinMa
Road, Developing Zone, Dalian
Tel: 0411-87612005 Fax: 0411-87530036
Web: www.dljp.gov.cn



**DALIAN
JINPU NEW AREA**
大 连 金 普 新 区

DALIAN JINPU NEW AREA

The first state-level new area in the northeast China
State cross-border e-commerce comprehensive experimental zone
Free trade experimental zone in Liaoning Province
State demonstrative zone of independent innovation in Shenyang and Dalian
Experimental zone of pilot city for construction of new system of open economy
Jinpu New Area goes into a golden period of development and strategic opportunity

STRATEGIC POSITIONING

One Ground

Strategic high land for the opening and cooperation in Northeast Asia

One Pole

An important growth pole to lead the revitalization of Northeast China

Three Zones

Pioneer zone of transforming development model in old industrial base
Demonstration zone of systemic and institutional innovation and self-dependent innovation
Pilot zone of new urbanization and balancing urban and rural development

Two Centers

Northeast Asia shipping Center and international logistics Center



目录

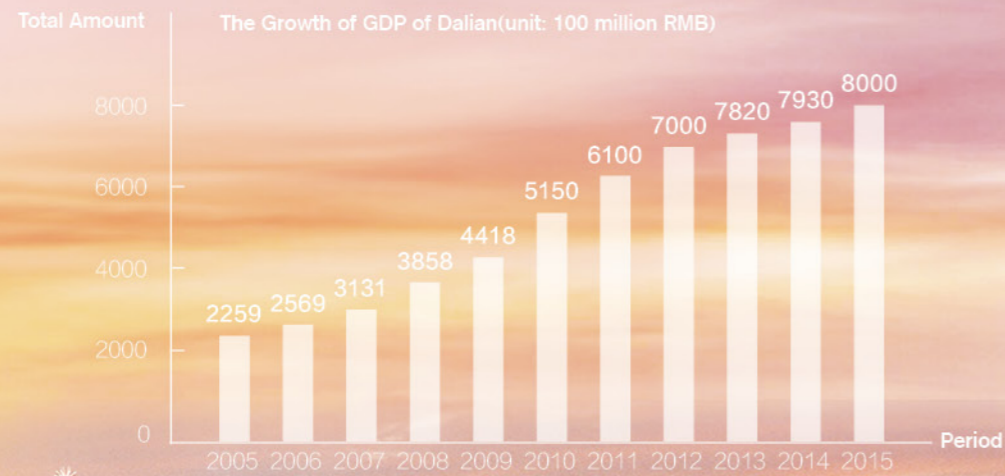


C O N T E N T S

04	Dalian Overview
06	Dalian Jinpu New Area
08	Investment Environment
14	Important Industries
22	Park Division
32	Service Support
38	Contact Us

Dalian Overview

Dalian is located in the eastern edge of the Eurasian continent, against the vast Northeast Plain to the north, facing the Yellow Sea in the east, the Bohai Sea in the west, and looking across the sea at Shandong Peninsular to its south. Dalian has become a maritime gateway of Northeast China, North China and East China to the world. As the permanent host city of Summer Davos and the only host city of China International Software and Information Service Fair, Dalian is an essential city of China in terms of port, trade, industry and tourism. It also plays an important role in North China as the international hub and logistic center.



Natural Conditions

Population: 6.69 million
Municipality Area: 12,574 km²
Temperature: Average 10.5°C
Highest: 27.3°C (August)
Lowest: -7.7°C (January)
Humidity: 64%-72%
Sunlight Hours: 2500-2800 hours
Sunlight Rate: 60%
Precipitation: 550-950 mm (21.7-37.4 inches)
Green Coverage: 42.8%
Coastal Line: 2,211 km

Database

16,000 foreign-funded enterprises
300 research institutes
244 Chinese and foreign financial institutes
138 Fortune Global 500 enterprises
30 colleges and universities
1/3 in the total foreign investment in the Northeast region





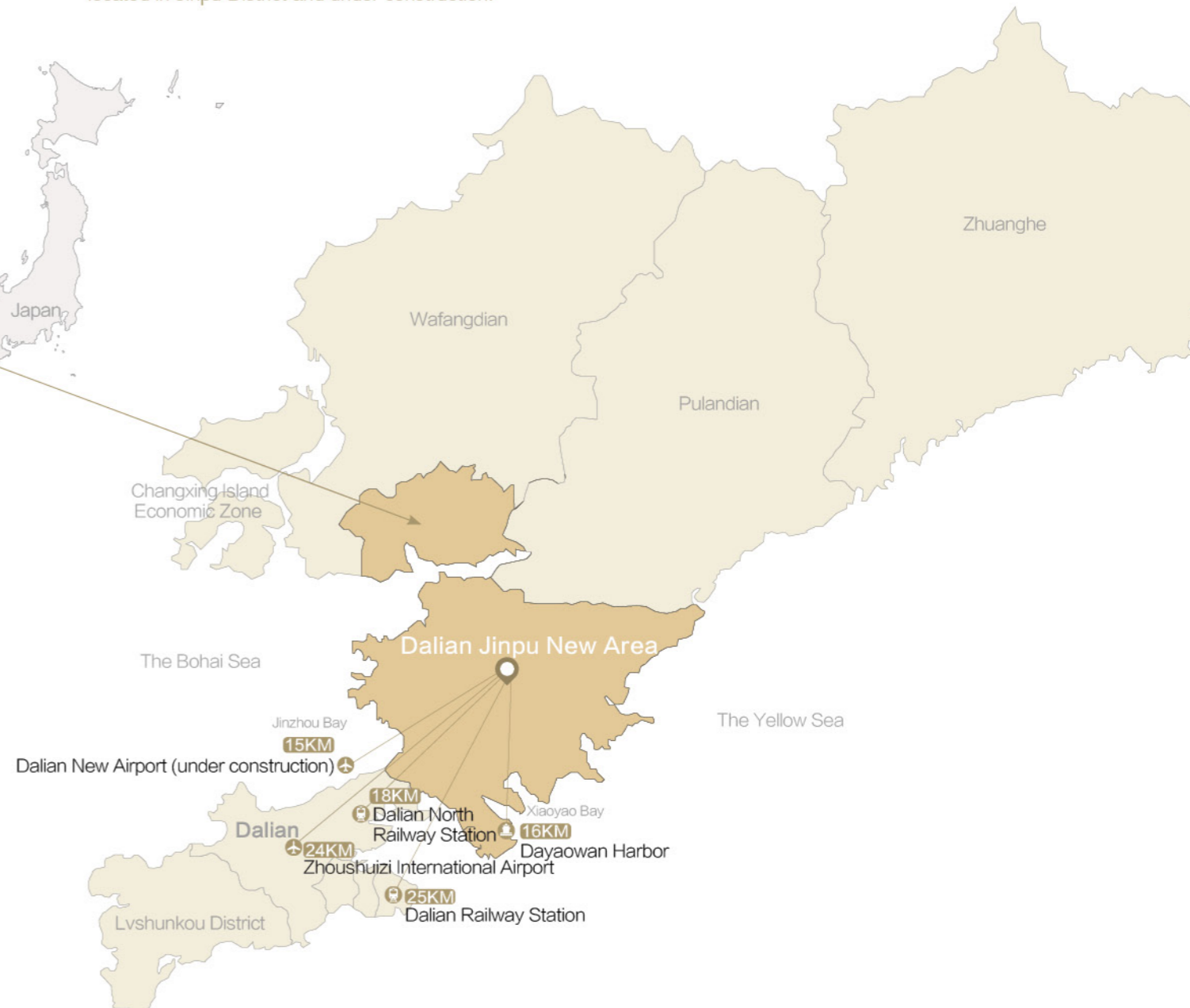
DALIAN JINPU NEW AREA

In June, 2014, China's central government approved to establish Dalian Jinpu New Area, which is the 10th state-level new area in China, as well as the first state-level new area in the Northeast area. It consists of the previous Jinzhou District, Dalian Economic and Technological Development Area, Bonded Area, Puwan Economic Zone and Golden Pebble Beach National 5A-Level Tourism and Holiday Resort. The total area is 2,299 square kilometers and the number of permanent population is 1.58 million. In 2015, its GDP reached 232 billion, which is approximately 30% of the total of the whole Dalian.



TRANSPORTATION

Dalian Jinpu New Area is approximately 25 kilometers away from the center of Dalian, Dalian Railway Station. 24 kilometers away from Dalian Zhoushuizi International Airport. Approximately 468 kilometers away from Beijing. 476 kilometers away from South Korea. 1,619 kilometers away from Japan. Dalian new airport is located in Jinpu District and under construction.



One Belt One Road

As an important port city in the Northeast, Dalian is taking important responsibility in the construction of One Belt One Road. As strategic high ground open to the cooperation in Northeast Asia, Jinpu New Area is the axis of "One Belt One Road". In the strategic layout "One Belt One Road", Jinpu New Area cooperates with Northeast Asia, promotes balanced development among different regions, especially focusing on the cooperation with Japan and South Korea, expanding to Russia and Mongolia. And provide further opening domains to Europe and America to promote economic cooperation with different countries and regions.



Harbor

Dalian Jinpu New Area has a container terminal with handling capacity of 100,000 tons, 300,000 tons Crude Oil Terminal, 300,000 Tons Ore Terminal, one of the biggest bulk grain terminal, vehicle terminal and LNG terminal. There are 39 berths which have handling capacity over 10000 tons. It has trade relations with over 300 ports in over 160 countries, responsible for more than 70% of the ocean freight and 90% of the container cargo in the Northeast.

Railway

Dalian-Harbin Railway, Ha Da Passenger line, the northwest railway network, Shen Da railway, Dan Da expressway pass through Jinpu New Area.

Cross-Sea Bridge

Dalian has started to construct a cross-sea bridge. The main project consists of an undersea tunnel, man-made island and the bridge. At 24 km in length, it will take 20 minutes from Dalian to Jinpu New Area after the construction completes.

New Airport

Dalian Jinzhou Bay International Airport (under construction) is located in Jinpu New Area, covers an area of 208,700 square meters. The new airport has a 700,000-square-meter terminal building. It is projected to handle 70 million passengers and 1 million tons of cargo annually. It will be completed and put into use in 2020. The airport expressway will be linked to Dalian transportation system and express way system. The subway which is under construction will be linked to the new airport as well.

AMENITIES



Education

Dalian has 30 universities and colleges, and more than 100 scientific research institutions of municipal level or above, including the Dalian Institute of Chemical Physics, 6 national key laboratories, 8 national engineering research centers and 2 national high-tech zones. Jinzhou New District has 8 post-doctoral workstations, 6 post-doctoral scientific research bases and 18 vocational education academies. There are 12 universities and colleges including Dalian University of Technology Software School, Luxun Academy of Fine Arts Dalian Campus, Shenyang Conservatory of Music Dalian Campus and Dalian Nationalities University. In addition, there are multiple international schools including the American International School, Japanese School and Korean International School, aiming to provide education for the children of foreign employees.



Financial Environment

Presently there are more than 100 financial institutes in Jinpu New Area, providing professional financial service. Jinpu New Area focused on the introduction of traditional financial industry at the same time, cultivating Internet finance and equity investment finance and other new financial industries. Dalian regional financial center core areas put emphasis on the Xiaoyao Bay international business district. We introduce 14 commodity and equity trading platforms , including Dalian bulk commodity trading center, and more than 80 financial and financial related enterprises including fund management companies and asset management companies.

Tourism

There are about 100 famous spots in Jinpu New Area, including first batch National 5A-Level Tourism, Golden Pebble International Convention Center & Resort. Some of the most famous spots such as Discoveryland Theme Park, Golden Pebble Golf Course, Tangfeng Hot Spring, have attracted over 4 million tourists every year. Jinpu new area is located in the north temperate zone 39 ° north latitude, where also has pleasant weather and clear sea. The seafood there is very nutritious and delicious; Because of the annual International Beach Culture Festival and other folk culture and art festival, Jinpu New Area is full of vitality.



PART **2**

Important Industries

Jinpu New Area is a core area gathering the most forefront and emerging industries of Dalian, and it is also the main area of investment promotion. At present, a total of nearly 70 countries and regions from nearly 5,000 foreign investment projects, more than 70 of the world's top 500 enterprises to invest in the construction of 91 major industrial projects; the total number of domestic-funded enterprises reached 30,000, the registered capital nearly 150 billion yuan. And it formed hundreds billions of industrial clusters, such as petrochemical industry, equipment manufacturing, electronic information, and other 10 billion industry clusters such as auto parts, bio-medicine. Meanwhile, strategic emerging industries, modern service industry is booming too.





PETROCHEMICAL INDUSTRY

Jinpu new petrochemical industry mainly consists of two parts. First, the Dagushan Peninsula processes Western Pacific Petrochemical, Yi Sheng Dahua and other heavy chemical enterprises, which are the new focus on creating and optimizing the transformation and upgrading of the core area of 100 billion industrial clusters. Another, Puwan Economic Zone is located in the Pine Island Chemical Park, gathering China Catalyst, DUT Qiwangda chemical technology enterprises and a number of well-known enterprises.

West Pacific Petrochemical Company Ltd., Dalian

Approved by the State Council, WEPEC was jointly invested by the Chinese and French shareholders who invests China's first large-scale Sino-foreign joint venture petrochemical enterprises. Founded in 1990, it has a total investment of 1.013 billion US dollars, fully operational by the end of 1997, the annual crude oil processing capacity of 10 million tons.

China Catalyst Co., Ltd Dalian

It is a comprehensive enterprise group registered in the State Administration of Industry and Commerce. It is a high-tech modernized enterprise group capable of research and development of core catalyst, chemical process kit and fine special chemical in a relatively complete chemical industry chain.

EQUIPMENT MANUFACTURING INDUSTRY

Jinpu New Area is gradually becoming the core area of equipment manufacturing industry, which represents the maximized functions of transfer and the development strategic. We also approved the "national new industrialization demonstration base" by the Ministry of Industry and Information Technology. Jinpu New Area promotes the development of intelligent equipment manufacturing industry and the construction of intelligent equipment industrial park. It also has formed a high-end CNC machine tools and automatic control system for the leading industry of intelligent equipment manufacturing industry, mainly including Dalian Machine Tool Group, Koyo technology, Yamasaki Mazak, Grob machine tools and a number of leading enterprises around the world.

Yamazaki Mazak Machine Tool (Liaoning) CO., Ltd

Founded in July 2011, the company was invested by Yamazaki Mazak (China) Co., Ltd with a total investment of 140 million US dollars and registered capital of 48 million US dollars, mainly engaged in R & D and production of high-end CNC machine tools and spare parts, flexible production line and its spare parts, laser precision machining equipment and parts.



Grob Machine Tools (Dalian) Co., Ltd.

Invested by the world-renowned high-end machine tool manufacturer Grob Group, with investment of 234 million US dollars. The company mainly designs and manufactures high-speed and high-precision five-axis CNC machining center. It is the fourth largest production base of Grob Group in the world.



ELECTRONIC INFORMATION INDUSTRY

The Electronic information industry in Jinpu New Area focuses on export-oriented economy, accounting for 60% of Dalian City industrial size, and 1/3 or more of Liaoning Province. We boast of 471 electronic information products manufacturing enterprises and 45 enterprises with output value over 100 million. Our enterprises are full of vitality for innovation. Intel 300mm, 65-nanometer chip project and "non-volatile chip project" have laid a solid foundation for DJNA and Dalian to become the world's leading high-end integrated circuit industry base.

Intel Semiconductors (Dalian) Co., Ltd

Intel Corporation, founded in 1968, is the world's largest manufacturer of personal computer parts and CPUs. Intel (Dalian) Project invested US \$ 2.5 billion in the first phase to produce semiconductor chips. The second phase has been invested US \$ 5.5 billion to produce non-volatile memory equipment. It is the largest sole foreign investment project in the country so far.



Canon Dalian Office Equipment Co., Ltd

Founded in September 1989, Canon is a wholly-owned enterprise invested and set up by the Japanese Canon company with a total investment of 394.35 million US dollars, with the registered capital of 133.42 million US dollars. It focuses on the production of office equipment for photocopiers cassette, laser printers, inkjet fax machines and organic semiconductors Photosensitive drums and other products. So far it has formed an integrated production system from the mold parts processing to toner cartridges. Meanwhile, the plant in Dalian has become a global production base for Canon cartridge reproduction.



AUTOMOTIVE AND AUTO PARTS INDUSTRIES

Jinpu New Area has five major vehicle assembly companies, more than 120 automotive and auto parts enterprises and the automotive industry has become the fastest growing industry in Jinpu New Area. These industries have a strong upgrade of vehicle manufacturing scale and grade in technology R & D, production and marketing, Now, it has formed a development trend with complete industrial chain of upstream and downstream industries. Among the 12 "China's auto parts manufacturing base" granted by the China Automobile Industry Association, Jinpu New Area's products ranked first in terms of both variety and quality brand. It ranked second in terms of total scale.

VW FAW Engine (Dalian) Co., Ltd.

It is founded in 2005 and jointly invested by FAW Group and German Volkswagen Group with a total investment of 380 million US dollars, engaged in automobile engine production. The project started operation in March 2007. It has an annual output of 546,000 units by 2015.

Dalian Brilliance Special Vehicle Base

Brilliance Dalian special vehicle industry base with a total investment of 2 billion US dollars, covers an area of 5.89 square kilometers. At present, the first phase covers 668,000 square meters, mainly produces airport shuttle bus, fire engines, sanitation trucks and buses. In the future it will be built into an international automotive industry park with functions integrating R & D, design, logistics, parts, marketing, automotive finance and manufacturing.





BIOPHARMACEUTICAL INDUSTRY

Dalian has a total of more than 300 biological enterprises of different categories and more than 140 pharmaceutical enterprises, of which 90% distributed in the Jinpu New Area. At present, Jinpu New Area has more than 50 above-designated-scale biopharmaceutical enterprises, of which nearly 10 enterprises with annual output value over 100 million yuan RMB. It has basically formed a biopharmaceutical industrial cluster led by Pfizer, Omron, Zhenao Group and other big companies and Dalian has become one of the three agglomeration area of Liaoning of biological industry.

Pfizer Pharmaceuticals (Dalian) Co., Ltd

Established in 1989, Pfizer is one of the earliest settled foreign-funded enterprises in here. With a total investment of 60.4 million US dollars, Pfizer mainly produces of anti-infective drugs, antifungal drugs, cardiovascular drugs, central nerve system drugs, hypoglycemic drugs and genitourinary drugs, etc. In 2015 Pfizer's operating income is 12.5 billion and tax 1.74 billion which makes Pfizer a major taxpayer of Jinpu New Area.



Dalian Zhenao Group Companies

Founded in 1996, Dalian Zhenao Group is mainly engaged in R & D of biotechnology and gene technology, and manufacture of bio-pharmaceutical and health products. Its total investment accounts for 2.16 billion yuan. Zhenao Group has China's largest nucleic acid manufacture base, with an annual production capacity of 15 billion yuan.

Cross - border E-commerce

Dalian was approved as the national cross-border e-commerce pilot zone. Meanwhile, DD port and bonded port area of Jinpu New Area were listed as the core area of Dalian (China) cross-border e-commerce pilot zone, becoming the only one in the Northeast of China, showing a good momentum of development. The Liaoning Provincial Government and the Dalian City approved the establishment of the "Dalian Jinpu New Area of cross-border e-commerce comprehensive pilot zone and economic and trade cooperation zone." Up to now, we formed an attractive business environment which has more than 20 O2O enterprises, 600 registered enterprises.

EMERGING INDUSTRY

Cross-border e-commerce, finance and finance-alike and other emerging industries injected new power to the development of Jinpu New Area. The Cross-border E-commerce Comprehensive Experimental Zone has tentatively formed a gathering effect. The country's third batch of free trade zone in Liaoning has been approved, of which the main planning area is located within Jinpu New Area.

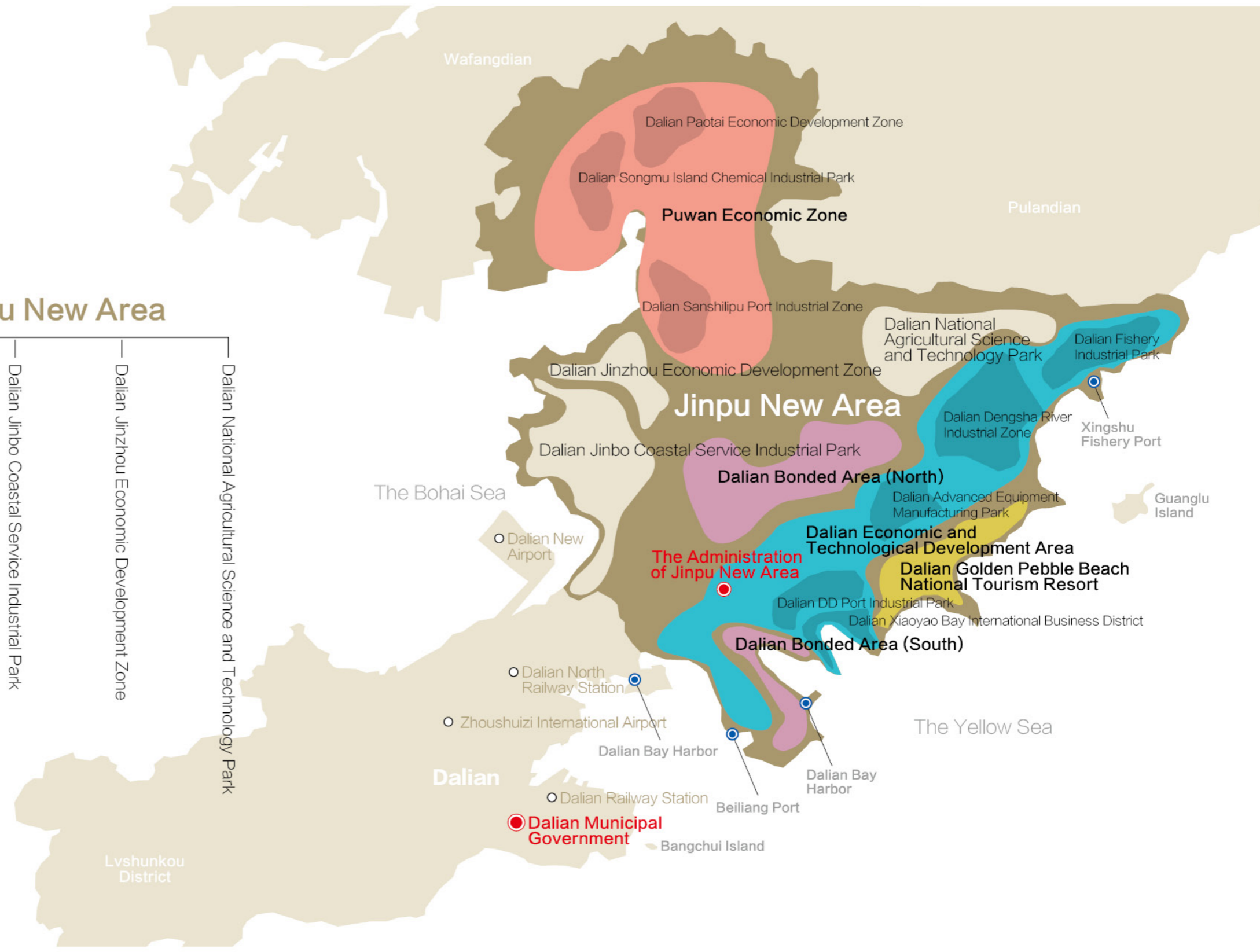
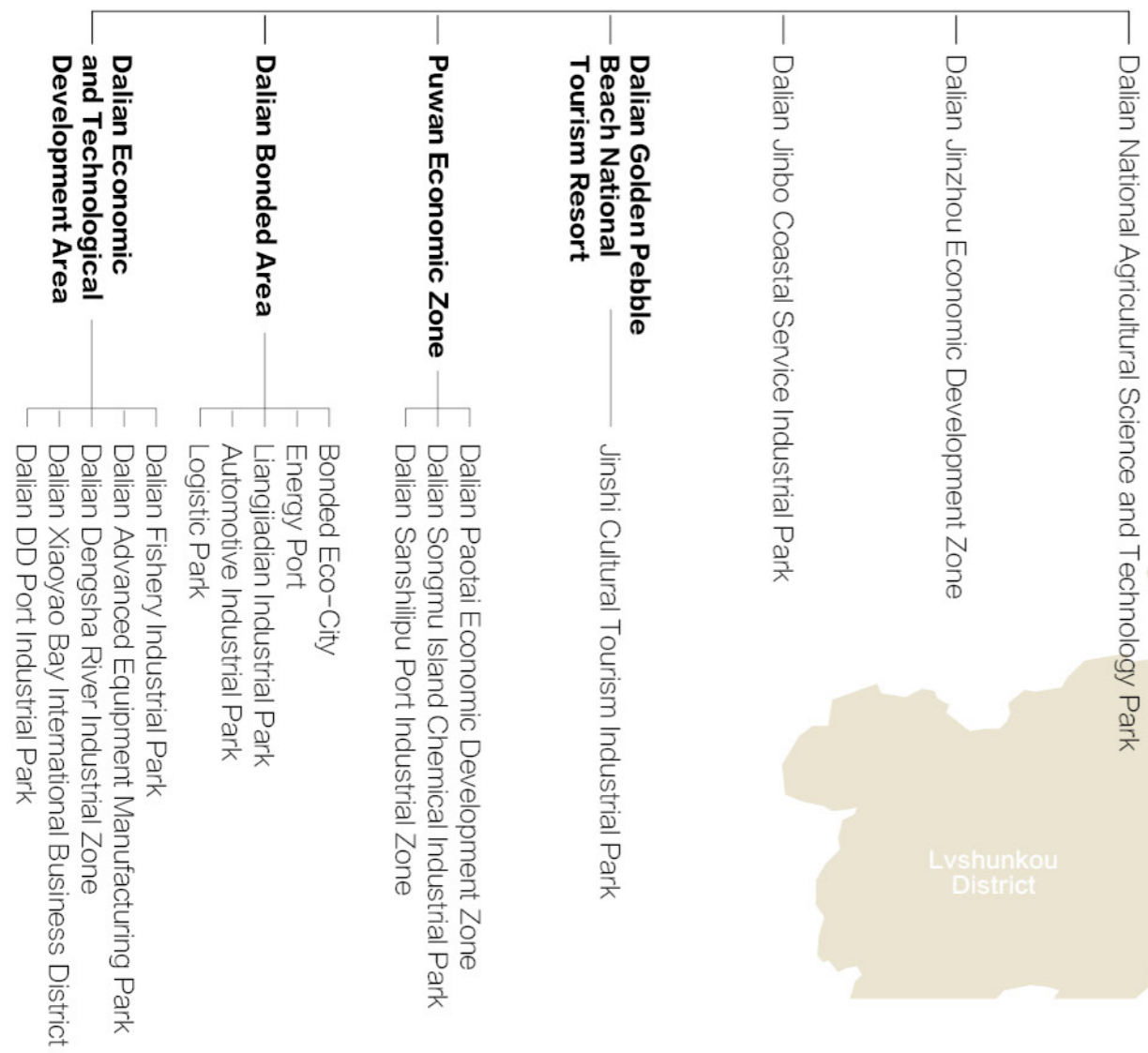
Free Trade Area

In 2016 September, Liaoning was approved the third batch of free trade area. The applied area of free trade area is 117.45 km², with the main planning area located in the new area. The successful approval of the Free Trade Area will bring new opportunities to the opening and development of Jinpu New Area.



PART 3 Park Division

Functional Parks of Jinpu New Area





DALIAN ECONOMIC AND TECHNOLOGICAL DEVELOPMENT AREA

Dalian Economic and Technological Development Area is the earliest state-level development zone in China. It has five industrial parks: Dalian DD Port Industrial Park, Dalian Xiaoyao Bay International Business District, Dalian Desha River Industrial Zone, Dalian Advanced Equipment Manufacturing Park, Dalian Fishery Industrial Park.

Dalian DD Port Industrial Park

37 kilometers away from the main city of Dalian, the park has a planned area of 30 square kilometers and is the closest functional park to the main city area of our Area. It has more than 450 registered enterprises, of which more than 150 enterprises are foreign-funded. We have 77 enterprises above designated size such as Intel and Dalian Machine Tool, more than 18 provincial-level R & D centers and 28 high-tech enterprises. We also have 12 public service platforms which include the National Marine pharmaceutical Engineering Center, Pharmaceutical Preparation Engineering Center, Dalian Testing Center. What's more, we own 15 technology carriers and incubation bases such as biopharmaceutical R & D center, LED lighting industrial park and IT technology building, etc. Our promoted key industries include biopharmaceutical, digital equipment manufacturing, chip manufacturing and LED lighting and software services outsourcing.



Dalian Xiaoyao Bay International Business District

We have a planning area of 20 square kilometers, a construction scale of 15 million square meters, a planned employment population of 300,000 people and a resident population of 120,000. Henderson Land, Hutchison Whampoa, Kerry Group, Po Neng Group, Greenland Group and other more than ten projects have been settled with a total investment of more than 51 billion yuan. Our promoted key industries are business finance, business services, administrative office, manufacturing services, culture and entertainment, technology development, port services and ecological living.





Dalian Dengsha River Industrial Zone

The total planning area is 130 square kilometers with initiating area of 40 square kilometers, 20 square kilometers built-up area and a total population of about 5 million. We own 36 enterprises above designated size, with the Northeast Special Steel, Huicheng aluminum, Shijie forging, Xianzheng Tube, Guangda metallurgy, Air Liquid. Promoted key industries include special steel, new materials, logistics, aviation industry (five major industries including aircraft R & D, aircraft assembly, aircraft maintenance, aviation and spare parts production and air operations services).

Dalian Advanced Equipment Manufacturing Park

Our planning area is about 31 square kilometers. We have 44 enterprises which are all second industry. There are four above designated-sized enterprises and Brilliance Auto, MAT Auto Parts, Zhenao Group, Liandong U Valley, Basell polyolefin are well known. Our promoted key industries include auto assembly and auto parts, advanced equipment manufacturing, biopharmaceutical, new energy and new materials, mold industry, electronic information, robots and other intelligent equipment manufacturing industry.



Dalian Fishery Industrial Park

The planning area is 79 square kilometers and initiating area of 42 square kilometers. We have a state-level central fishery port and the Xingshu-Changhai land transport passenger terminal. 22 enterprises, including aquatic products logistics enterprises, construction, real estate, marine food industry have settled. The promoted key industries include agricultural products deep processing, which is mainly represented by aquatic products deep processing, cold chain logistics and upstream and downstream industry chain, bio-pharmaceutical R & D, which is mainly represented by R & D and application of marine bio-pharmaceutics, and modern service industry represented by tourism and leisure industry.





PUWAN ECONOMIC ZONE

Puwan Economic Zone has a planned area of 707 square kilometers and a population of 171,000. It has three industrial parks: Dalian Sanshilipu Port Industrial Zone, Dalian Songmu Island Chemical Industrial Park and Dalian Paotai Economic Development Zone.

Port Industrial Zone, Sanshilipu, Dalian

Its planning area is 20.24 square kilometers of which 10.8 square kilometers of basically completed. So far 35 enterprises have settled here, among which more than 5 are above designated size enterprises, well-known enterprises include DSIC equipment, Dalian Marine Propeller, Mitsubishi Hitachi Power System, China Railway Tielong cold chain logistics, Rongke Power, Shunheanping logistics, Yifeng metal, Xingjian CNC and Jixing Electronics, with a total investment of about 16 billion yuan. The output value in 2015 amounted to 307 million yuan. The promoted key industries include high-end equipment manufacturing industry, new energy equipment manufacturing industry, modern logistics industry, wood processing, etc.

Dalian Songmu Chemical Industrial Park

Its planning area is 35 square kilometers, with 13 square kilometers basically completed. There are 82 contracted enterprises of which 20 are above designated-size. Well-known enterprises include Dahua Group, Linde Gas, Jinyuan Petrochemical, Jiasheng New Material, Longxiang Catalyst, Baiao Chemical, Daqi Technology, Kunpeng Petrochemical and Jinkai Pharmaceutical. Their total investment is about 50.9 billion yuan. The output value in 2015 amounted to 12 billion. The promoted key industries include fine chemicals, bio-pharmaceuticals, catalysts, etc.



Dalian Paotai Economic Development Zone

It has a planning area of 6.19 square kilometers, 144 contracted enterprises, 20 enterprises above designated size. Well-known enterprises include Dacheng food, Dong Lin food, Yiqiao Seedling, Min Kang Pharmaceutical, Wanrute Heavy Industries, Jingang Tianma cement. Food processing, machinery processing, building materials are promoted key industries.



DALIAN GOLDEN PEBBLE BEACH NATIONAL TOURIST RESORT

Dalian Golden Pebble Beach National Tourism Resort is located on the Yellow Sea coast in the northeast of Dalian with a land area of 62 square kilometers and a sea area of 58 square kilometers. It is a national 5A-class tourist attractions. Golden Pebble Beach is surrounded on three sides by the sea, warm in winter, cool in summer and pleasant in climate. Its coastline stretches for more than 30 kilometers and gathers 300 million - 900 million years of geological wonders. It enjoys the reputations of "Solidified Animal World", "Natural Geological Museum" and "Divine power sculpture park". The main attractions include Dalian Binhai National Geopark, 5-kilometer Golden Coast, Golden Pebble Cultural Expo Square, Golden Pebble Discoveryland Theme Park, Jinshi Golf Club, Dalian Golden Pebble Beach International Camping Site, etc.



DALIAN JINZHOU ECONOMIC DEVELOPMENT ZONE



It has 50 square kilometers of construction land with a starting area of 8 square kilometers. 5 projects have been built, such as Guangtaiyuan environmental protection, Tianjia Electronics, etc. Four companies such as Dalian Yupei logistics and Zhengda Qingyuan building materials are under construction. Four other companies including Suning Logistics and Oude fuel gas are ready to acquire land for their projects. The zone has signed contracts with 3 projects which include aluminum for automotive engine and, fire equipment, etc. The promoted key industries include modern warehousing logistics, food materials, food deep processing, import food reprocessing.



DALIAN NATIONAL AGRICULTURAL SCIENCE AND TECHNOLOGY PARK

It is located at the northeast end of Jinpu New Area. The park covers an area of 164.6 square kilometers. Insisting on management by innovative thinking and low carbon concept, utilization of local resources and dependence on leading industrialized enterprises, the park focuses on the development of seven pillar industries including seed cultivation, facility vegetables, flowers, nursery stock, featured fruits, healthy breeding, processing and distribution of agricultural products, leisure and tourism.

DALIAN GOLDEN BOHAI COASTAL SERVICE INDUSTRIAL AREA

Dalian Golden Bohai Coastal Service Industrial Area is adjacent to Dalian Jinzhouwan International Airport, which is currently under construction. It covers a land area of 150 square kilometers and a sea area of 350 square kilometers. The coastline is 55 kilometers long. It has 10 natural bays, 8 offshore islands. It has four distinctive seasons and its climate is mild and pleasant. So far, the park has signed 22 high-end modern service projects with a total planned investment of more than 200 billion yuan. Shimao Group, Wanheng Group, Coastal Group, CNRE Group and Boee Group are well-known domestic and foreign listed companies and leading real estate enterprises have registered and settled in here. Singapore's Maple tree Logistics Park project, the Miguo theme park project and a number of other major industrial projects are under negotiation. We promote the modern service industry as the key industry.



PART

4

Service Support

ONE-STOP APPROVAL

" Five certifications combined, one code for each certificate "

Jinpu New Area takes the lead to prepare the trail of "The Six Lists" including administrative permission approval list, power list, duty list, mediation program list, government special funds management list and administrative undertaking charges list. 18 administrative approval functional departments and 151 administrative approval procedures have all been stationed in the Administrative Center. The so called "processed in one window, approved by one stamp and finished in one step", "government authority is limited to the power list and approvals can only be processed in the Administrative Center" have been truly achieved. The online administrative hall has been operating for pre-examination. The "five certification combined, one code for each certificate" procedure for newly registered enterprises is the first in Liaoning Province and the fastest in the country. Industrial projects, hotels, cultural and innovation projects, logistics and trade projects can now be processed in parallel. The number of processing steps has been reduced from 32 to 5, and processing time has been reduced from 149 working days to 25 working days. Processing time for pre-construction approval has been reduced to only 20 days.





BUREAU OF COMMERCE —HOME FOR ENTERPRISES

Establishing a warm “home” where enterprises are able to find and willing to stay

With the goal of establishing “an open international standard investment environment, a convenient trade environment, an impeccable environment of integrity, a vast development environment for labor force”, Jinpu New Area Bureau of Commerce takes full advantages of medium organizations and chambers to help enterprises with its understanding of government policies and economical operation to solve all kinds of difficulties. Bureau of Commerce is sparing no effort to establish a first-rate service-oriented governmental organization with strong infrastructure, institutional assurance and cultural background.

INCUBATION BASE CONSTRUCTION

Providing development opportunities for middle and small-sized enterprises

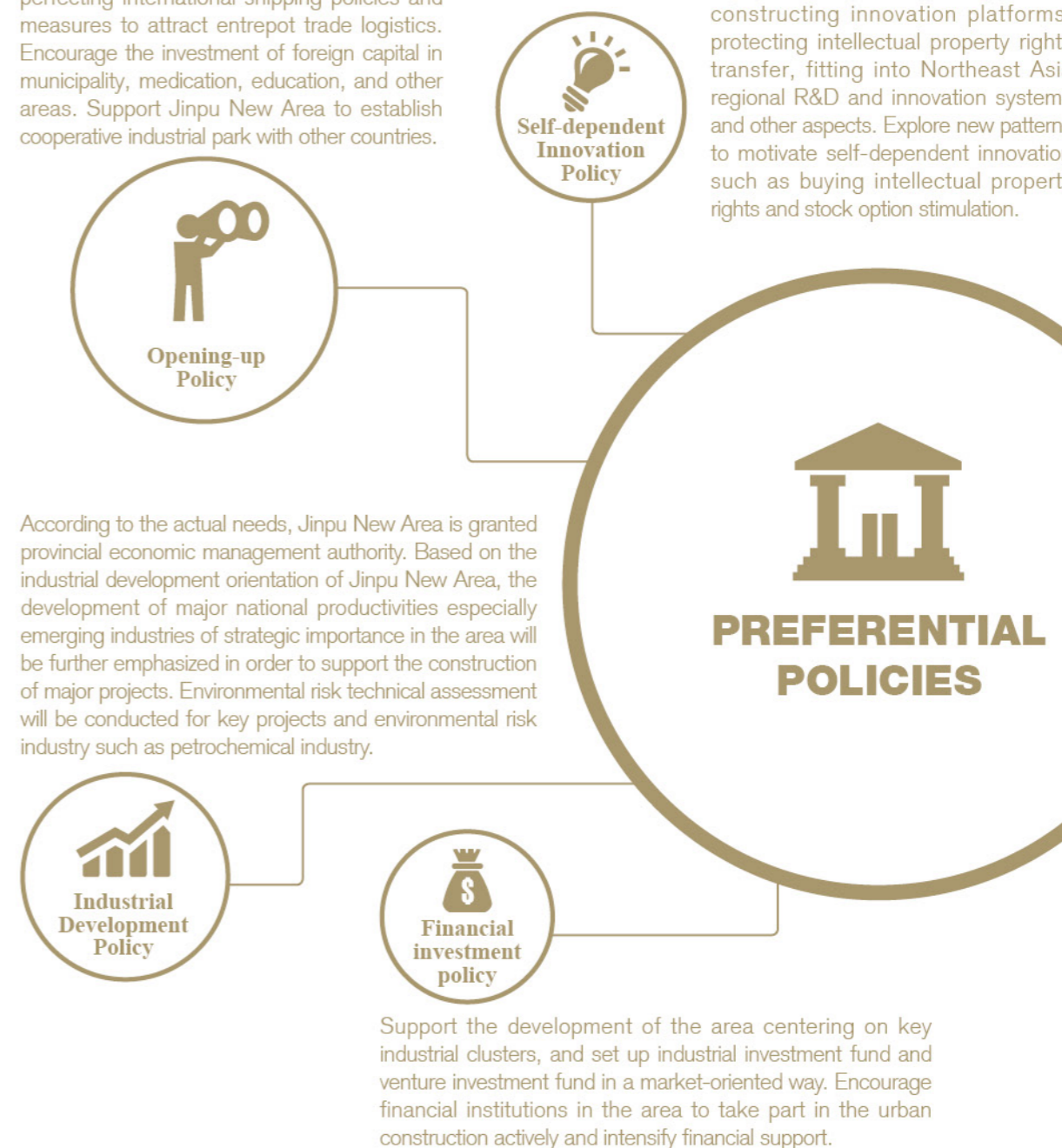
Responding to the national policies, Jinpu New Area is now pushing forward the development of innovative and start-up businesses vigorously and its bid for National Self-innovation Demonstration Area is conducted actively. In order to



strengthen the construction of “Double Creations Platform”, the DD Port “Innovative Incubation Park” and in total twenty-four Technological Innovation Incubation Centers have started operation successively. The China-Dalian High-skilled Talent Training Base and Business Incubation Base has come into service. Integrating training, teaching, evaluation, entrepreneurship and R&D, it is the largest state-level skilled talent training platform in Northeast China with various professions, most advanced equipments and highest technical merit.

Support the area to play a leading and exploratory role in setting facilitation policies for investment & trade in goods and services. Keep promoting the direct dealing between RMB, JPY and KRW, and support the cross-border use of RMB. Develop bonded trade and off-shore trade and conduct pilot program for bonded delivery of futures by taking advantages of the Dayao Bay Harbor. Keep perfecting international shipping policies and measures to attract entrepot trade logistics. Encourage the investment of foreign capital in municipality, medication, education, and other areas. Support Jinpu New Area to establish cooperative industrial park with other countries.

Support the area to play a leading and exploratory role in attracting talents, constructing innovation platforms, protecting intellectual property rights transfer, fitting into Northeast Asia regional R&D and innovation systems and other aspects. Explore new patterns to motivate self-dependent innovation such as buying intellectual property rights and stock option stimulation.



COST OF INVESTMENT

INSURANCE

Name	Company Burden	Personal Burden
endowment insurance	18%	8%
unemployment insurance	0.5%	0.5%
employment injury insurance	0.4-2.1%	-
maternity insurance	1.2%	-
medical insurance	8%	2%
public housing fund	12% (also 6% housing subsidies)	14%
total	46.1-47.8%	24.5%

POWER SUPPLY a. Overhead lines multi-loop power supply charges:

Voltage Level	Charging Standard (RMB / KVA)
0.38/0.22KV	270RMB
10KV	220RMB
66KV	110RMB
110KV and above	90RMB
Basic Electricity Tariff	Charging Standard (RMB/KWH)
dynamic electricity	from 0.4838RMB
lighting	from 0.7662RMB

b. Underground multi-circuit power supply line charges shall not exceed 1.5 times the overhead line charges.

HEAT SUPPLY

Classification	Price
residential house	28RMB/ m ²
industrial workshops	workshop<=3.8m 33RMB/ m ²
residential house	>3.8m extra payment will be charged

WATER

Classification	Unit	Price	Dirty Water Charges	Note
household use	RMB/m ³	2.30	0.8	inclusive of military and school
industrial use	RMB/m ³	4.10	0	inclusive of administrative organizations
commercial	RMB/m ³	5.00	1.2	inclusive of tourism spots
special industry	RMB/m ³	20.00	1.7	inclusive of sauna and swimming pool

FUEL GAS

Measurement Unit	Price	Note
RMB/m ³	3.5	residential
RMB/m ³	4.5	military, school, kindergarten
RMB/m ³	4.5	non-residential

Note: 3 RMB/ m³ for pipeline gas

STEAM SUPPLY

Steam is supplied by heat and power plant (Over heated steam) and central boiler (saturated steam).
Temperature: 270℃ .Pressure: 0.6-0.8Mpa.
Price: RMB220/Ton (If the usage is less than 4 T/D, the payment shall be counted as 4T)

PART

5

Contact us



INVESTMENT SPECIALISTS



Ma Xiulian
Deputy Director
Cell: 138 4267 1919
Tel: 0411-87926536
E-mail: maxiuliandlc@hotmail.com



Qu Yan Sheng
Deputy Director of Merchants Business Center
Cell: 138 4261 6169
Tel: 0411-87612190
E-mail: quyansheng@dda.gov.cn



Song Fang
Japan and South Korea Business Department
Cell: 139 4260 0752
Tel: 0411-87630381
E-mail: songfang@dda.gov.cn



Han Song
Hong Kong, Macao and Southeast Asia Business Department
Cell: 159 0426 2679
Tel: 0411-87630195
E-mail: 270186197@qq.com



Paul Ding
Department Europe and America
Cell: 139 4084 5225
Tel: 0411-87630380
E-mail: paul.ding@163.com



Li Xiang
Domestic Business Department
Cell: 186 4114 0787
Tel: 0411-87630137
E-mail: lixiang@dda.gov.cn